

## Abrasion resistance

Approx. 100000 Martindale rubs,  
EN ISO 12947 1 & 2

## Pilling resistance

Class 4-5 2000 rubs, EN ISO 12945-2

## Tensile

Warp: 1490 Newton  
Weft: 1101 Newton, EN ISO 13934-1

## Seam slippage

Warp: 2,0 mm Weft: 2,5 mm

## Lightfastness

Light colors 4-5  
Middle color 4-5  
Dark color 4-5, EN ISO 105 B02

## Fastness to rubbing

Dry class 4-5 EN ISO 105 X12  
Wet class 5 EN ISO 105 X12

## Tear strength

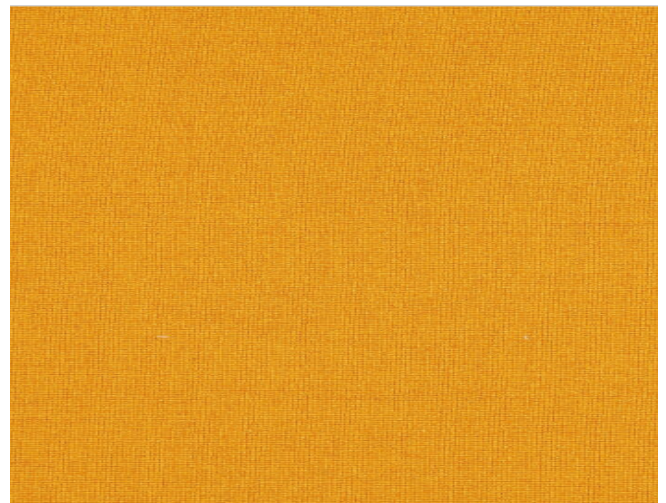
Warp: 269,5 Newton  
Weft: 267,2 Newton

## Product specific properties

- suitable for both fitted and loose fitting upholstery
- strong fabric
- soft and full grip
- rich and light shiny aspect

## Test specifications:

Yarn dyed:  
Piece dyed: ✓  
Damp- prevented: ✓  
Dirt-prevented: ✓  
Flame resistance: ✓  
Cigarette test: BS 5852 (1979) ✓  
Match test: ✓



## General product specification

Product group: Polyester flatweave  
Composition faceside: 100%PES  
Composition backing: 100%PES  
Bonding: Fleece  
Material Weight: 476 g/lm  
Tariff No. 54076130  
Minimum usable width: 143 cm  
Roll length: 40 meter  
Number of colors: 22

## Information about the productgroup:

This is a fabric formed by 2 thread groups crossing at right angles to each other; this fabric consists of 100% synthetic fibres, in this case polyester. Polyester is strong and has a high level of abrasion resistance. The closer the threads are to each other, the higher the density and the heavier the fabric will be.

